

Bankside Yards Update

14.04.2022

Matt Price
Wally Alvarez
Cameron McGeoch



MULTIPLEX

MULTIPLEX



Contents

- 1. Progress Update**
- 2. Upcoming Works**
- 3. Social Value and Community**
- 4. Environmental**
- 5. Questions / Comments**

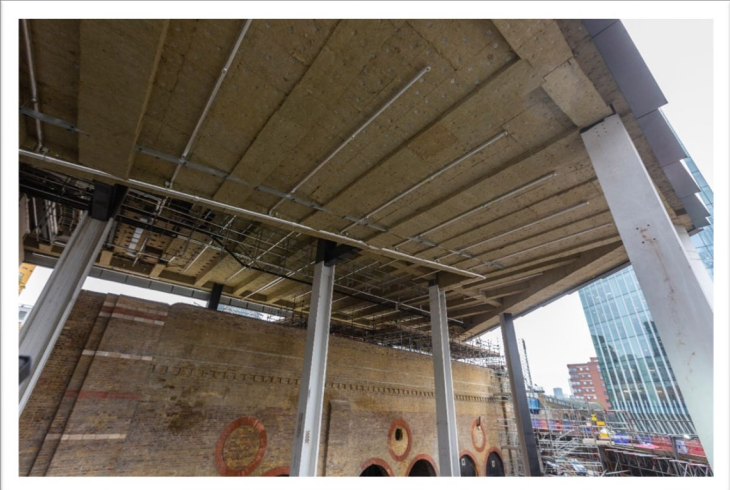
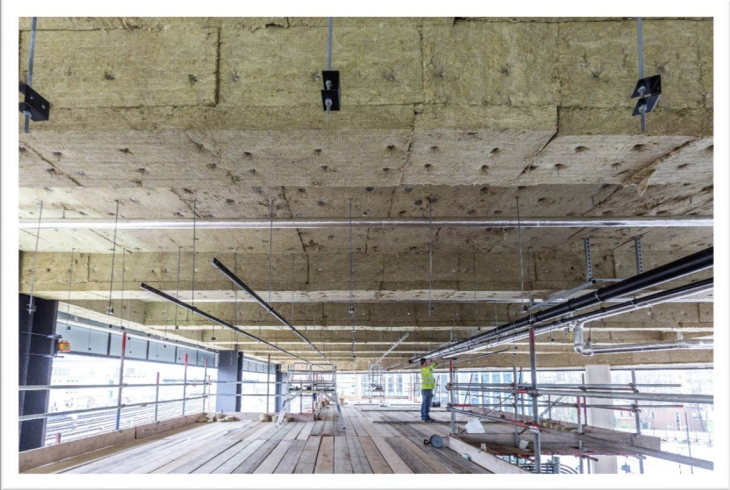
Progress Update

- Roof finished substantially completed.
- The Building 3 reception high level service and ceiling finishes completed. Main access scaffold removed.
- MEP installation substantially completed. Commissioning commenced.
- Wash-room fit out and MEP services installation progressing well throughout the tower levels, with inspections completed up to Level 9, installation progressing up to Level 18.
- Basement MEP works and associated civil activities are progressing well in B1/ B2 levels.
- Raised floor has commenced on Level 18, with all floors below complete. CAT A floor MEP works are complete on Levels 4, 5, 10 & 16. Ceilings are complete on Levels 4, 5, 10 & progressing on Level 16.
- Stairs 2 and 3 internal finishes progressing.
- Final inspections have commenced to the lower floors for wet areas and office areas.
- Plaza and high level services and soffit insulation progressing well.

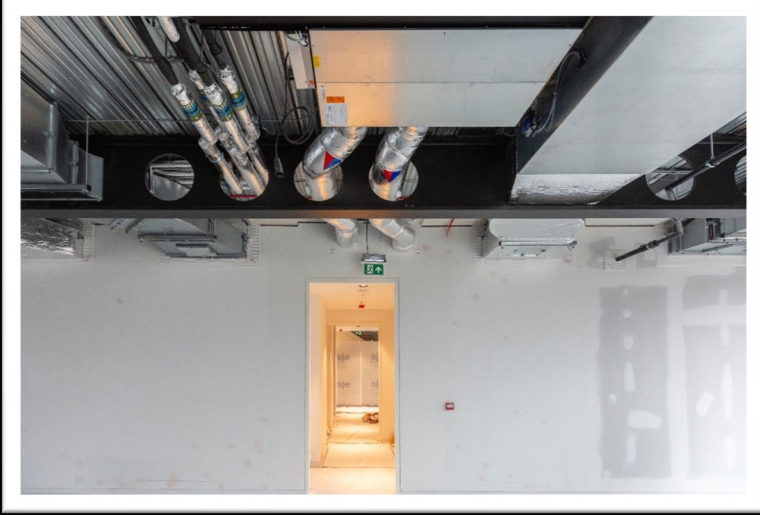
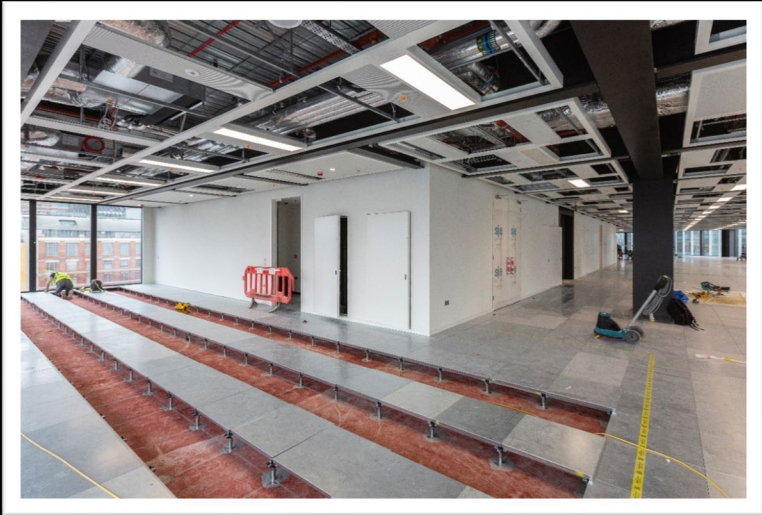
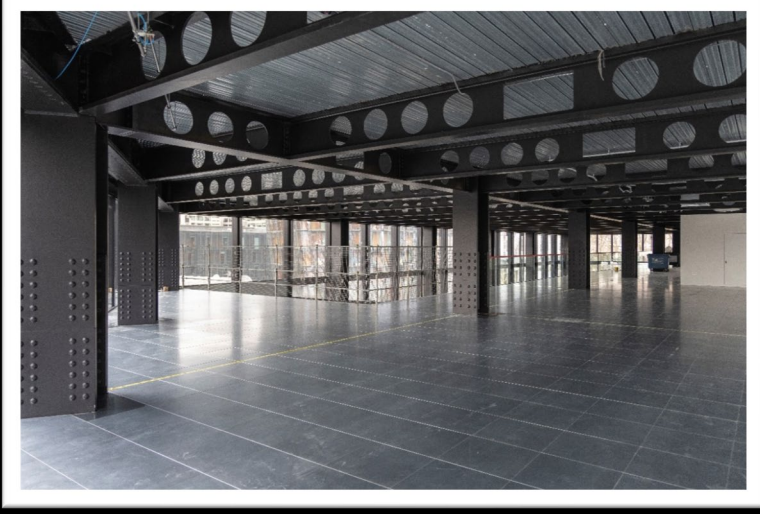
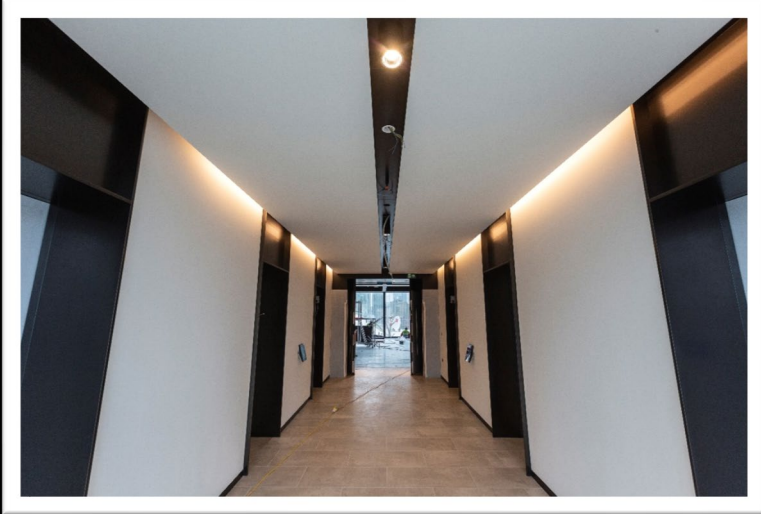
Progress update – Basement (B1 and B2)



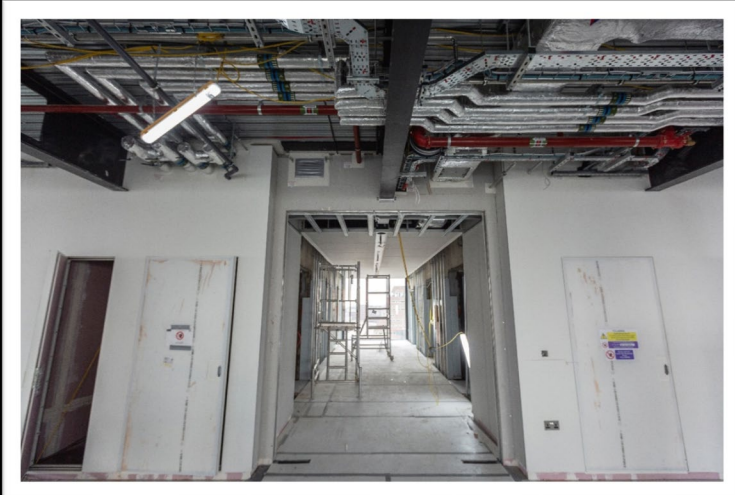
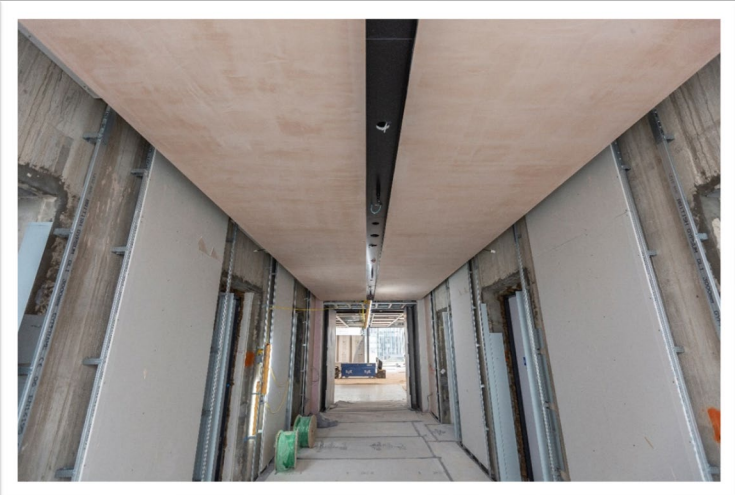
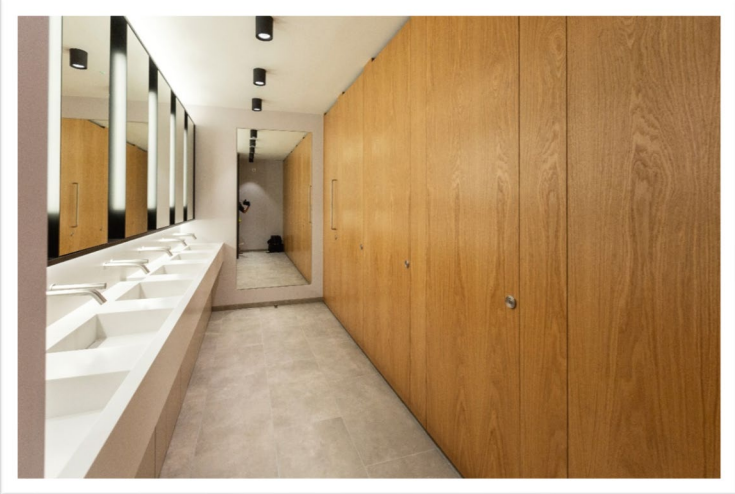
Project Progress – Ground Floor & External



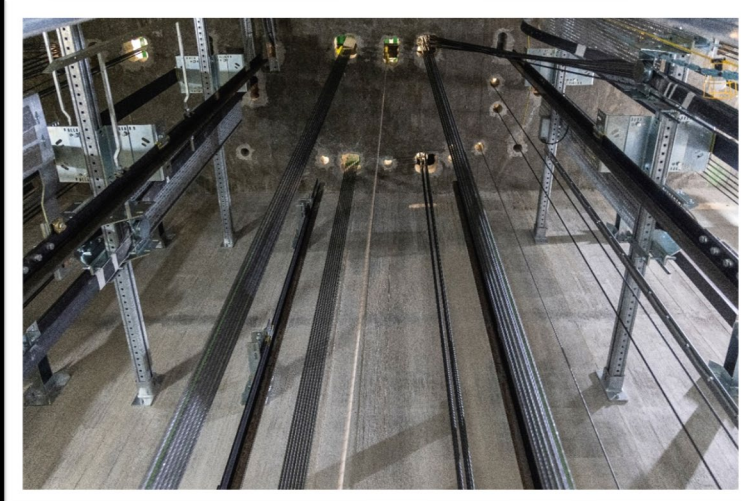
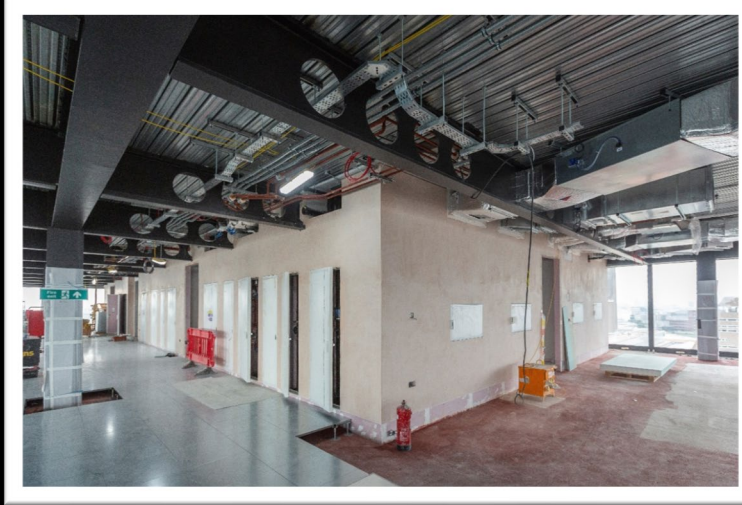
Project Progress – Levels 1-6



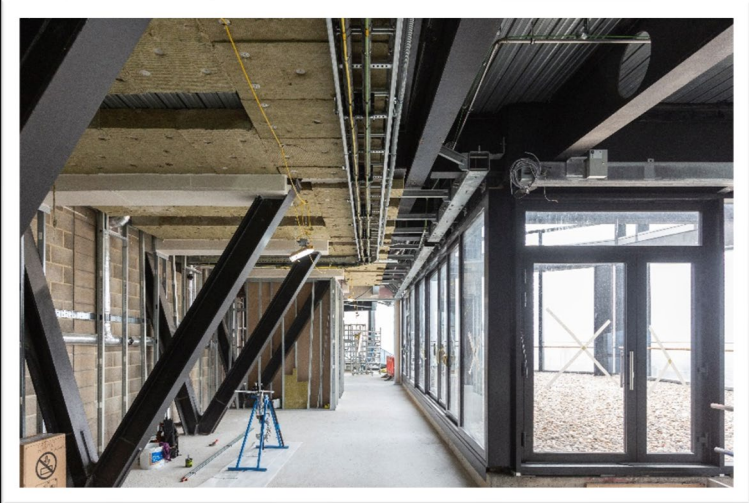
Project Progress – Levels 7-12



Project Progress – Levels 13-18



Project Progress – Levels 18M & 19



Project Progress – Look-ahead

- Basement waterproofing works will be substantially completed.
- Building 2 basement MEP services installations to progress.
- Building 3 completion of all roof related works and continue with commissioning works.
- Complete MEP services and plant installation to Building 3 risers and CAT A floors to progress commissioning.
- Complete all Raised Access floor installation to all floors.
- Building 3 lifts install continue and mobilisation of the remaining passenger lifts.
- Ground floors reception floor finishes to commence and allow for the main reception desk to be installed.
- Progress the escalator finishes.
- Invicta plaza soffit works to progress.
- Weekend works up to 4pm. Quiet works from 2pm – 4pm.

Social Value and Community - KPIs

Area	KPI	Progress
New apprenticeships created	8	18
Existing apprenticeships facilitated	5	5
Work Experience Placements	10	25
Graduates	5	9
NVQ Completions	1	2
Other Training & Upskilling (D&I)	N/A	2
Student engagement activities	10	15
Local SME procurement spend	10% of contract value	£831K+
Charitable fundraising	£7.5k	£26K
Community engagement activities	12	20

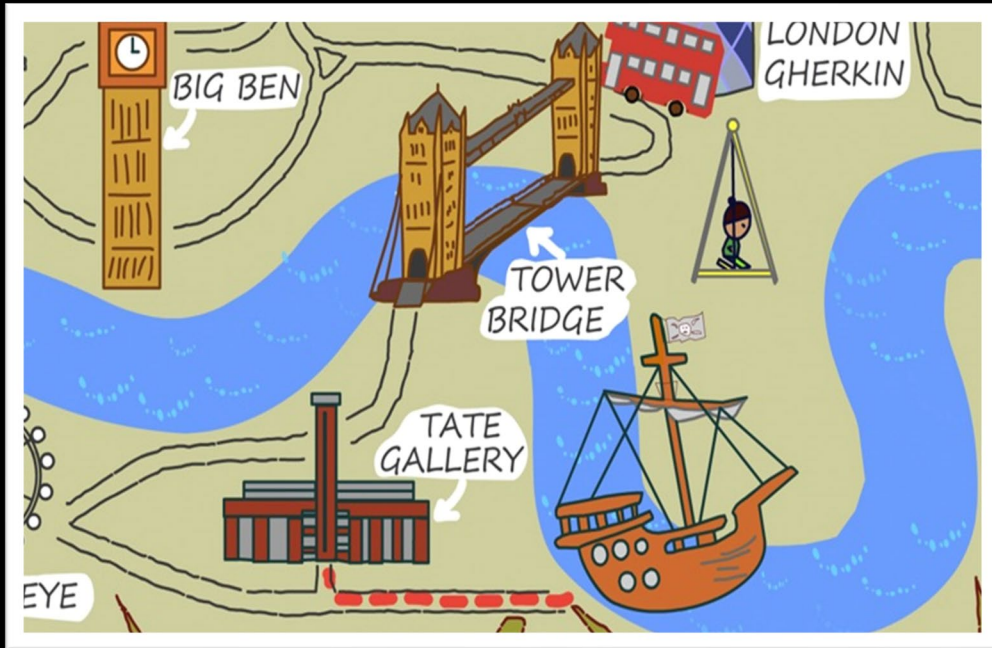
Social Value and Community – Additional Progress



'Excellent'



Ethical Labour



Fundraising



Donations/Collections

Environmental – Working Hours

Ref	Description of Works	Start Date	End Date	Times	Status
1809212	Quiet internal fit out works, loading of internal floors with materials using internal lift	07/03/2022	30/06/2022	18:00-22:00 Monday - Friday	Approved by Southwark
1816632	Quiet internal working including drylining, decorations, mechanical and electrical service install, soffit installation	26/03/2022	31/05/2022	Saturday 14:00-16:00 Sunday 10:00-16:00	Approved by Southwark
1821630	Scaffold gantry removal works (temporary road closure)	21/05/2022	29/05/2022	Saturdays 14:00-18:00 Sundays 10:00-18:00	Approved by Southwark

Environmental - Noise and Dust Monitors



Environmental - Noise and Dust (Jan)

Receptor	No. of Short-term Exceedances (15- min)	No. of Full Day Exceedances (10h Mon- Fri, 5h Sat)
Noise Monitor 1 (N1)	0	0
Noise Monitor 2 (N2)	0	0
Noise Monitor 3 (N3)	0	0
Noise Monitor 4 (N4)	0	0
Total	0	0

Receptor	No. of Short-term Exceedances (1 hour)	No. of Full Day Exceedances (10h Mon- Fri, 5h Sat)
Air Quality Monitor 1 (AQ1)	0	0
Air Quality Monitor 2 (AQ2)	0	0
Air Quality Monitor 3 (AQ3)	0	0
Air Quality Monitor 4 (AQ4)	0	0
Total	0	0

Environmental - Noise and Dust (Feb)

Receptor	No. of Short-term Exceedances (15- min)	No. of Full Day Exceedances (10h Mon- Fri, 5h Sat)
Noise Monitor 1 (N1)	0	0
Noise Monitor 2 (N2)	0	0
Noise Monitor 3 (N3)	0	0
Noise Monitor 4 (N4)	0	0
Total	0	0

Receptor	No. of Short-term Exceedances (1 hour)	No. of Full Day Exceedances (10h Mon- Fri, 5h Sat)
Air Quality Monitor 1 (AQ1)	0	0
Air Quality Monitor 2 (AQ2)	0	0
Air Quality Monitor 3 (AQ3)	0	0
Air Quality Monitor 4 (AQ4)	0	0
Total	0	0

Environmental - Noise and Dust (Mar)

Receptor	No. of Short-term Exceedances (15- min)	No. of Full Day Exceedances (10h Mon- Fri, 5h Sat)
Noise Monitor 1 (N1)	0	0
Noise Monitor 2 (N2)	0	0
Noise Monitor 3 (N3)	0	0
Noise Monitor 4 (N4)	0	0
Total	0	0

Receptor	No. of Short-term Exceedances (1 hour)	No. of Full Day Exceedances (10h Mon- Fri, 5h Sat)
Air Quality Monitor 1 (AQ1)	0	0
Air Quality Monitor 2 (AQ2)	0	0
Air Quality Monitor 3 (AQ3)	0	0
Air Quality Monitor 4 (AQ4)	1	0
Total	1	0

THANK YOU