

MULTIPLEX

Bankside Yards Update

10.02.2022

Built for **precision**





Contents

- 1. Progress Updates**
- 2. Upcoming Works**
- 3. Social Value and Community**
- 4. Environmental**
- 5. Questions / Comments**

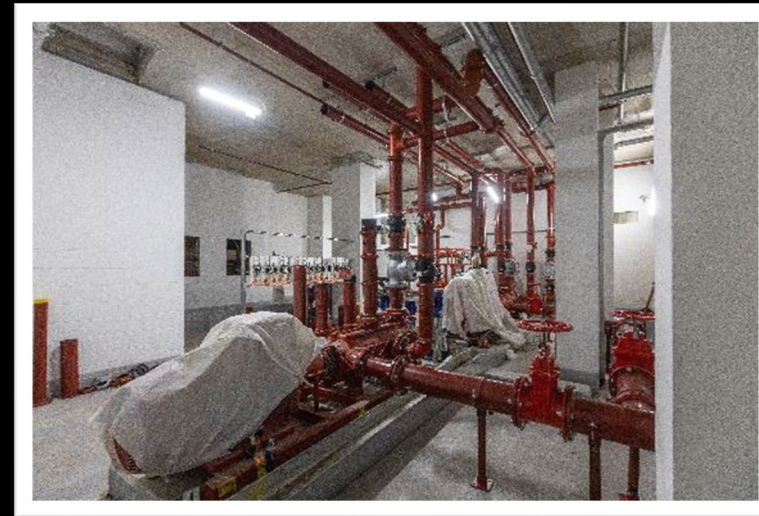
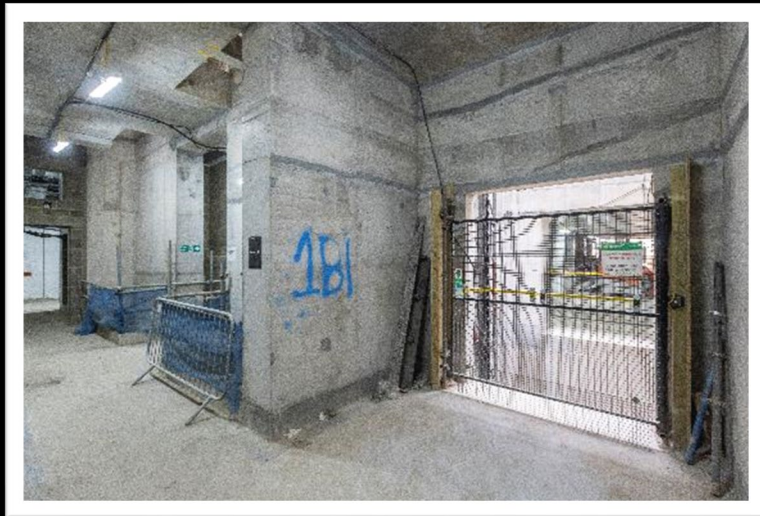
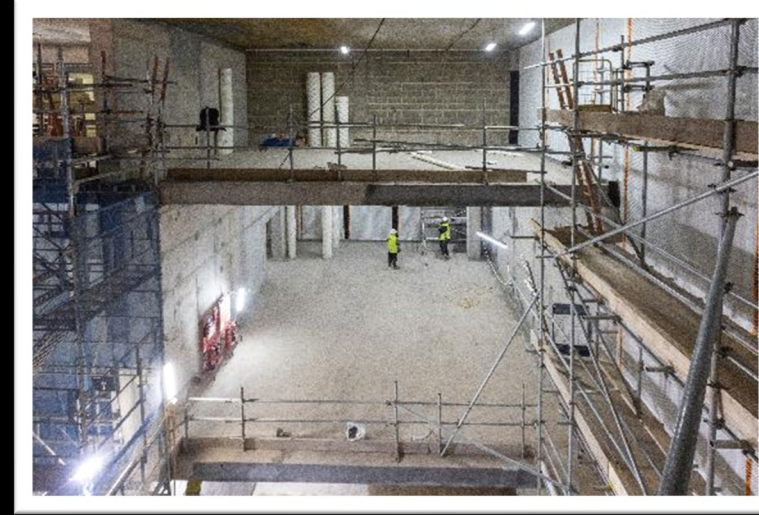
MULTIPLEX

Progress Update

- Waterproofing on roof and terraces substantially completed. Sedum Green roof completed at Level 19.
- The Building 3 reception high level service installation progressing.
- Tower crane removed as per the programme. Roof finishes and MEP installation progressing well in preparation for permanent power and commissioning.
- Wash room fit out and MEP services installation progressing well throughout the tower levels.
- Basement MEP works and associated civil activities are progressing well in B1/ B2 levels.
- Raised floor has commenced on Level 9 and progressing well. CAT A floor MEP works are substantially complete on Levels 4, 5, 10 and 16. Ceilings are complete on Level 4 and progressing on Level 5 and 10. Stair 3 internal finishes have commenced.
- Level 2 and Level 3 finishes progressing well with proposed completion by mid February 2022.
- Plaza and high level services and soffit insulation progressing well.

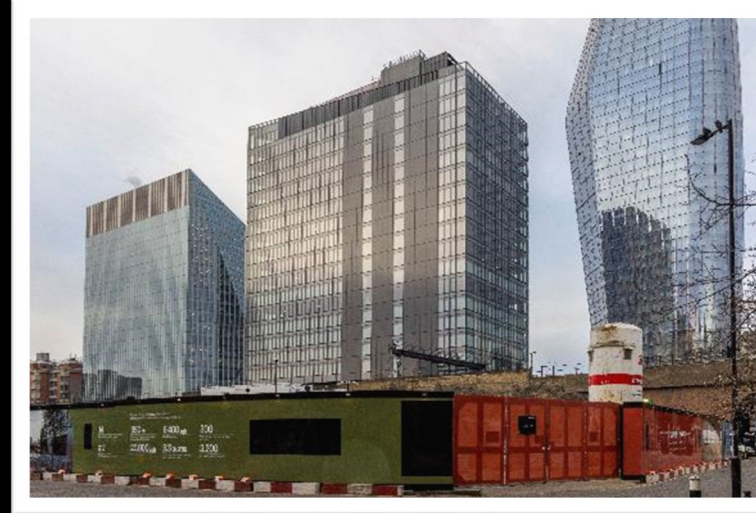
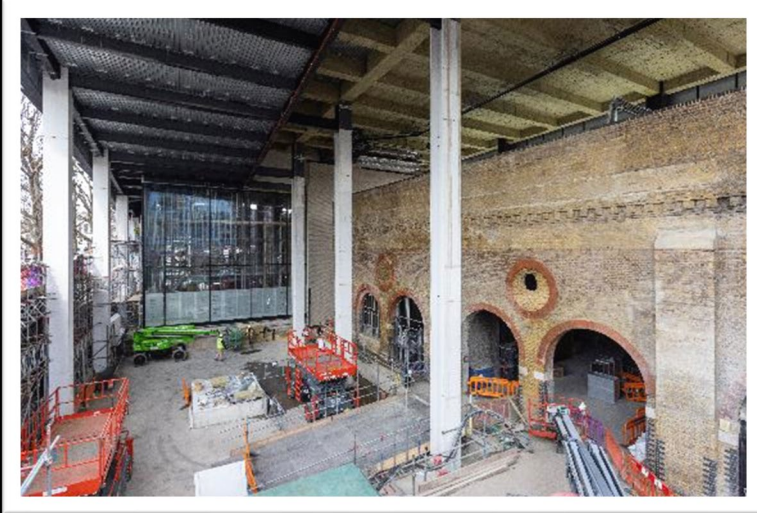
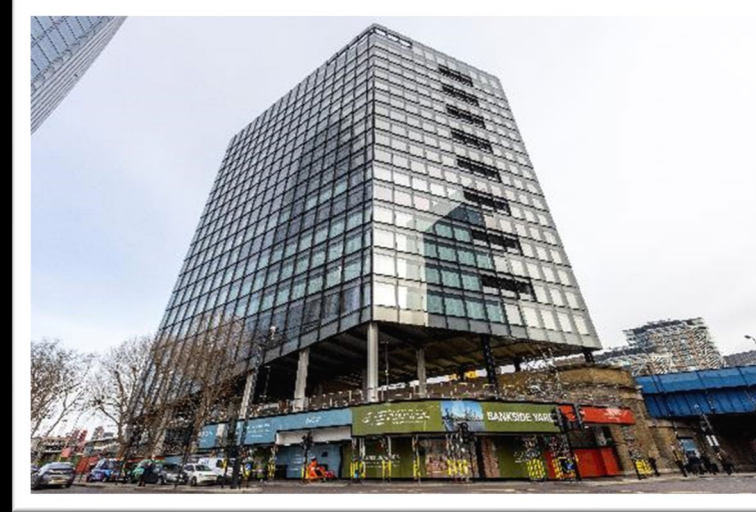
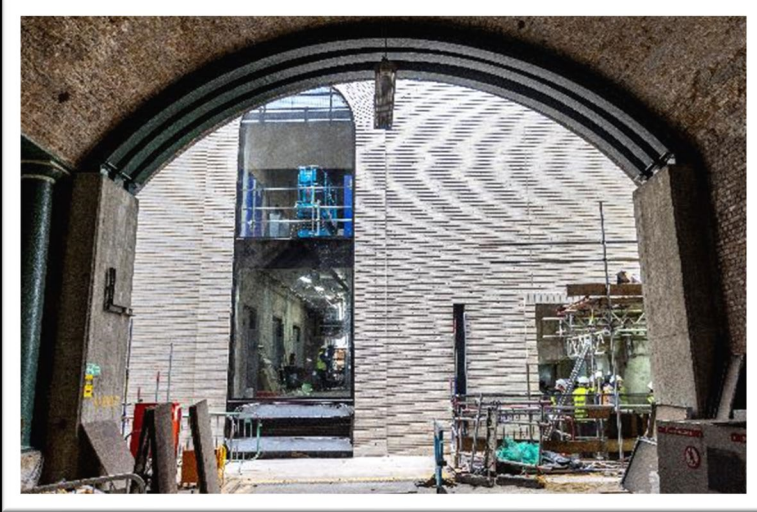
MULTIPLEX

Progress update – Basement (B1 and B2)



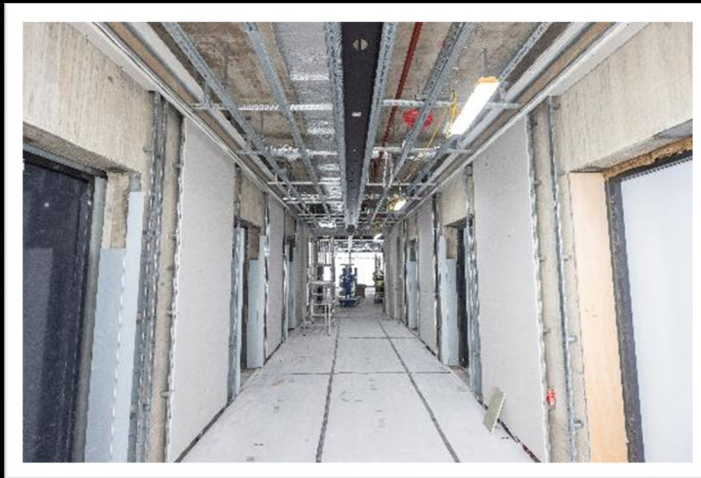
MULTIPLEX

Project Progress – Ground Floor & External



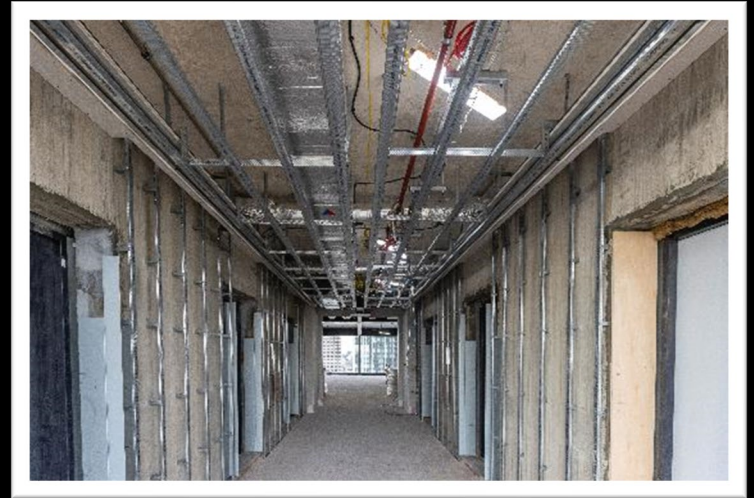
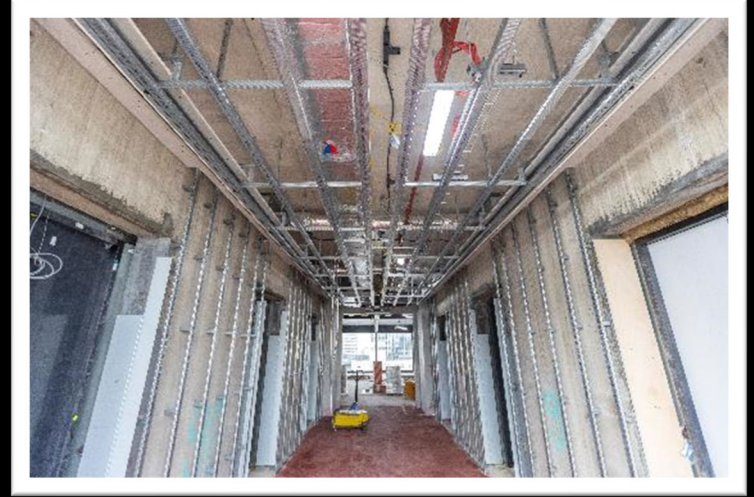
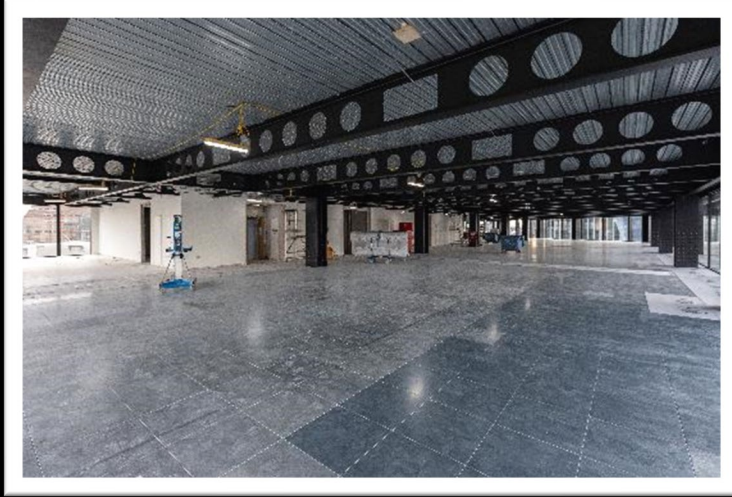
MULTIPLEX

Project Progress – Levels 1-6



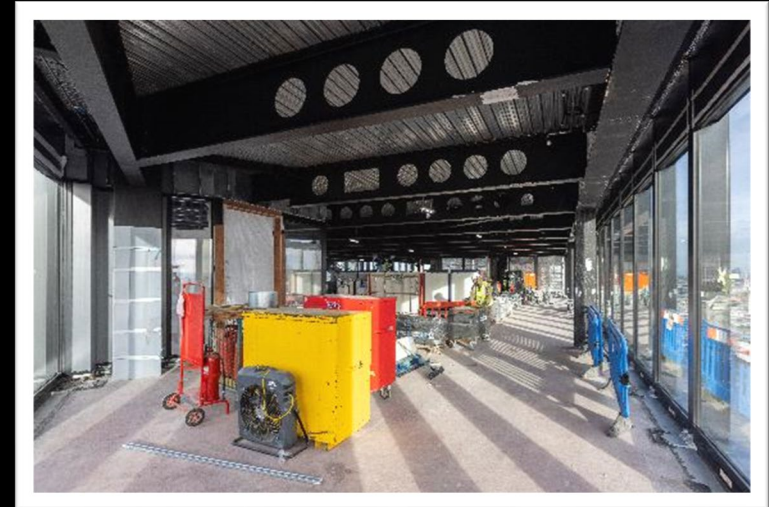
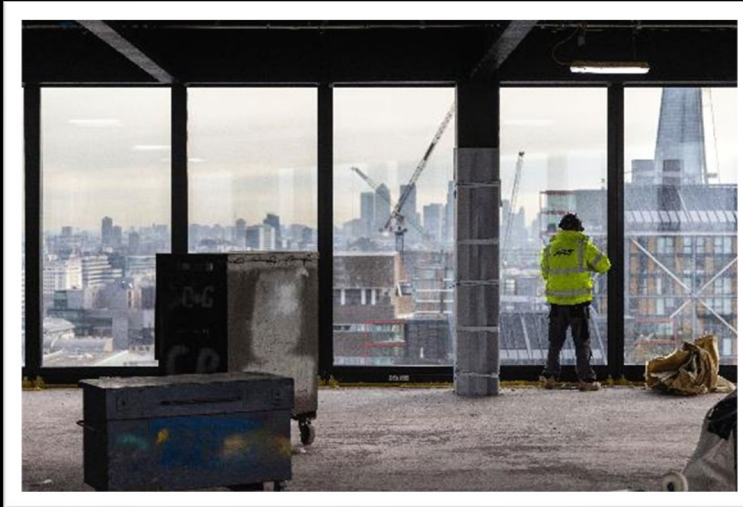
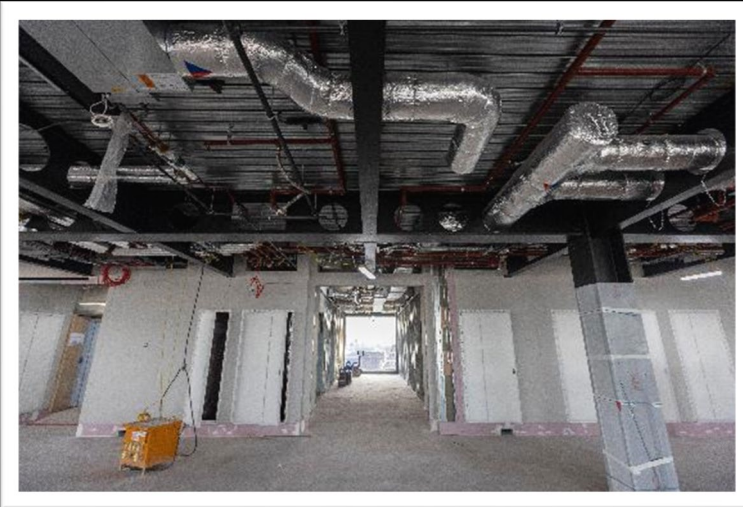
MULTIPLEX

Project Progress – Levels 7-12



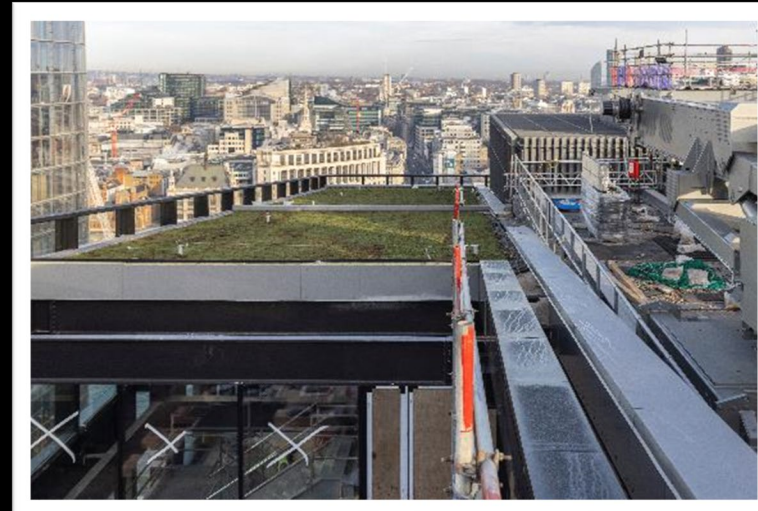
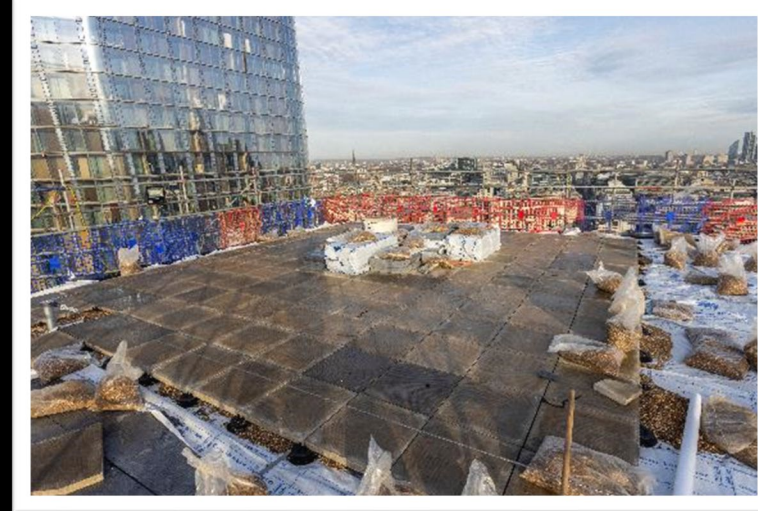
MULTIPLEX

Project Progress – Levels 13-18



MULTIPLEX

Project Progress – Levels 18M & 19



MULTIPLEX

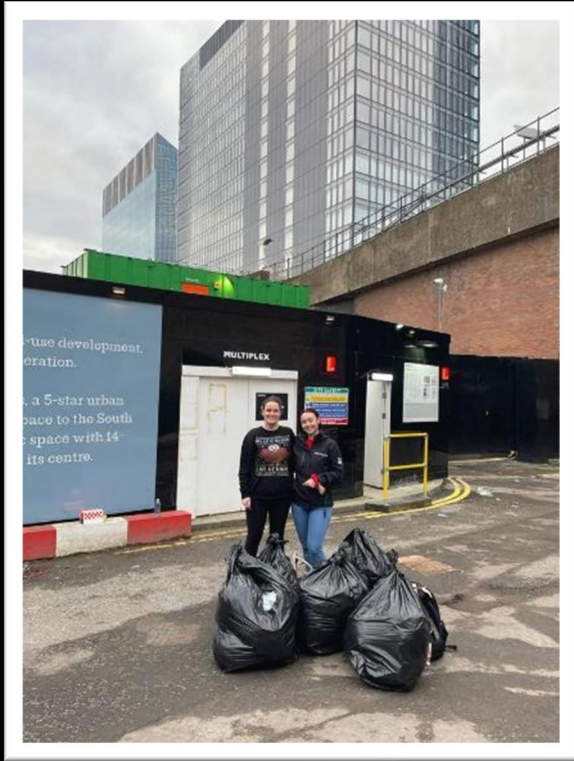
Project Progress – Look-ahead

- Basement waterproofing works ongoing.
- Building 1 substructure detailed design progressing for submission.
- Building 2 basement MEP services first fix and connections to wet riser and sprinkler tanks.
- Building 3 completion of all roof related works and commence commissioning works.
- Progress MEP services and plant installation to Building 3 risers and CAT A floors to allow for commissioning to commence, plus release the boarding activities to the higher levels.
- Raised Access floor installation progressing to floors.
- Building 3 lifts install continue and mobilisation of the first passenger lift.
- Ground floors reception and plaza high level ceiling works progressing.
- Main entrance revolving doors to be installed.
- Weekend works up to 2pm. Quiet works from 2pm – 4pm.

Positive Impact – Social Value and Community KPIs

Area	KPI	Progress
New apprenticeships created	8	8
Existing apprenticeships facilitated	5	5
Work Experience Placements	10	17
Graduates	5	8
NVQ Completions	1	2
Other Training & Upskilling (D&I)	N/A	1
Student engagement activities	10	12
Local SME procurement spend	10% of contract value	£784K
Charitable fundraising	£7.5k	£23,600
Community engagement activities	12	16

Social Value and Community – Additional Progress



Charities and Fundraising

Social Value and Community – Additional Progress



Mentoring and Volunteering

Positive Impact – Sustainability – Working Hours

Out of Hours Working and Section 61 Permissions

No.	Internal coding type	Type	MPX Lead	Reference number	Type of proposed activity	Start Dates	End Dates	Times	Additional Hours	Status
1	N/A	Section 61	Joshua Davies	Notice No. 095851	All works	04/05/2020	17/07/2023	Monday - Friday 08:00-18:00, Saturday 09:00-02:00	0	Ongoing
2	N/A	Out of hours	David Miller	1769313	Loading of internal floors with materials using internal lift	01/12/2021	31/03/2022	18:00-20:00 Monday - Friday	80	Ongoing

Positive Impact – Sustainability – Noise and Dust Monitors



Positive Impact – Sustainability – Noise and Dust (Nov)

Receptor	No. of Short-term Exceedances (15- min)	No. of Full Day Exceedances (10h Mon- Fri, 5h Sat)
Noise Monitor 1 (N1)	1	0
Noise Monitor 2 (N2)	0	0
Noise Monitor 3 (N3)	0	0
Noise Monitor 4 (N4)	0	0
Total	1	0

Receptor	No. of Short-term Exceedances (1 hour)	No. of Full Day Exceedances (10h Mon- Fri, 5h Sat)
Air Quality Monitor 1 (AQ1)	0	0
Air Quality Monitor 2 (AQ2)	0	0
Air Quality Monitor 3 (AQ3)	0	0
Air Quality Monitor 4 (AQ4)	0	0
Total	0	0

Positive Impact – Sustainability – Noise and Dust (Dec)

Receptor	No. of Short-term Exceedances (15- min)	No. of Full Day Exceedances (10h Mon- Fri, 5h Sat)
Noise Monitor 1 (N1)	1	0
Noise Monitor 2 (N2)	0	0
Noise Monitor 3 (N3)	0	0
Noise Monitor 4 (N4)	0	0
Total	1	0

Receptor	No. of Short-term Exceedances (1 hour)	No. of Full Day Exceedances (10h Mon- Fri, 5h Sat)
Air Quality Monitor 1 (AQ1)	0	0
Air Quality Monitor 2 (AQ2)	0	0
Air Quality Monitor 3 (AQ3)	0	0
Air Quality Monitor 4 (AQ4)	0	0
Total	0	0



MULTIPLEX

Thank you

www.multiplex.global